

FLEX - PLUS 4000-3000

Led Strip

Alimentazione / Operating Voltage	24 V
Potenza / Power	22 W/mt
Larghezza Pcb / Width Pcb	12 mm
Altezza / Height Stripe	2 mm
Lunghezza / Length Stripe	5000 mm
Taglio segmento/ Length per Cut	62 mm
N° LED	128 / mt
IP	20
Temperatura esercizio Storage Temperature	- 30° C - + 70°C
Lifetime	L70B20 50000H



	Flusso Luminoso Luminous Flux	Efficienza Efficiency	Colore Luce Led Color
DA-PLUS-4000-3000	3534 lm/mt	135 lm/W	3000 K



Via Cadorna, 40/42
20032 Cormano (MI)
Tel. +39 02 84269630
Fax +39 02 84269631
info@dadalighting.com
www.dadalighting.com

FLEX - PLUS 4000-3000
Led Strip

Light efficiency:



Output: 3534 lm

Light quality:

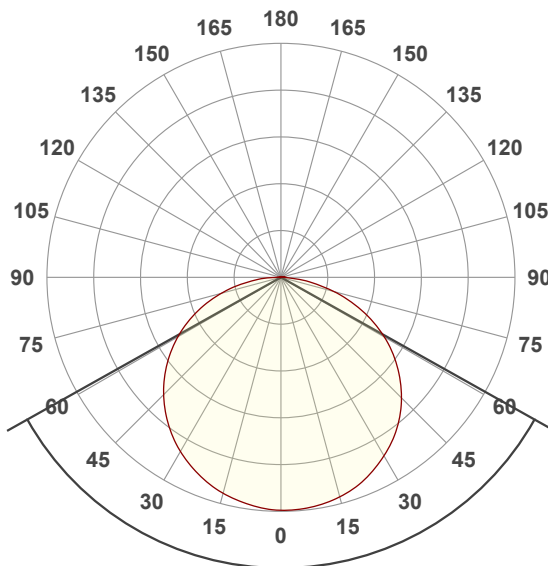


Peak: 1106 cd

Color temperature:



Power: 22,0 W
24,0V @ 0,917A



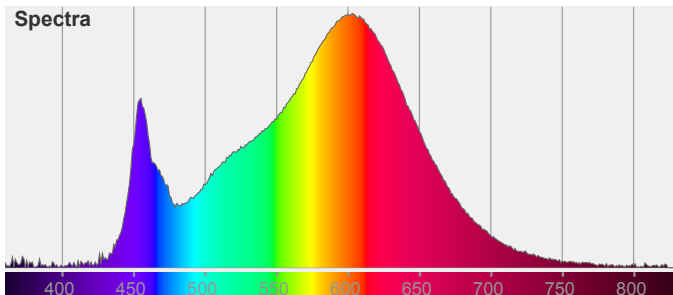
Beam angle **121,5°**

Color



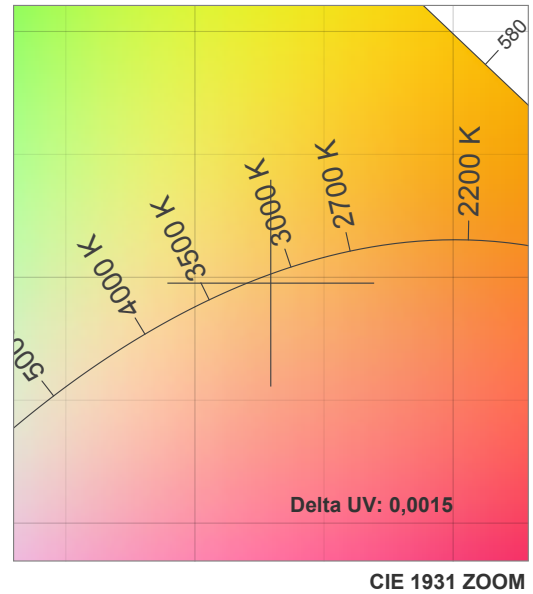
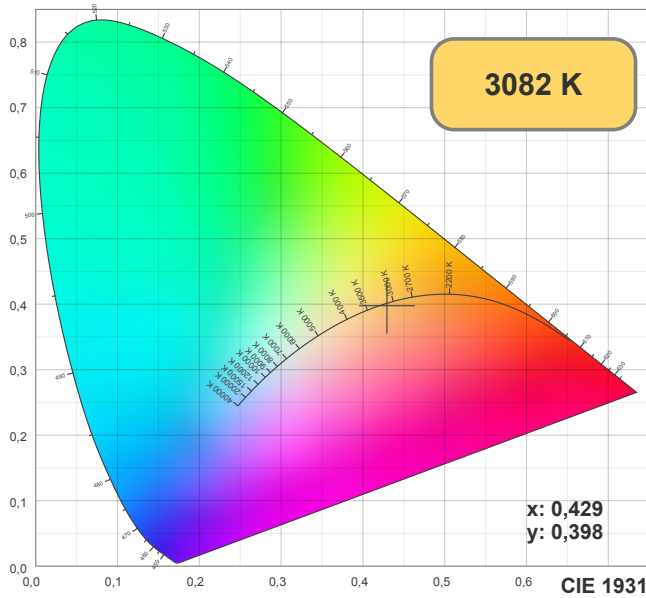
CIE1931
x: 0,429
y: 0,398

Spectra

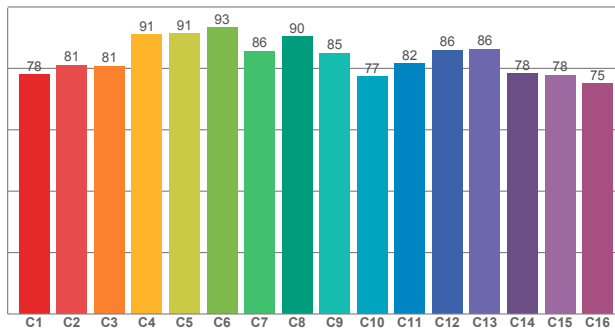


FLEX - PLUS 4000-3000

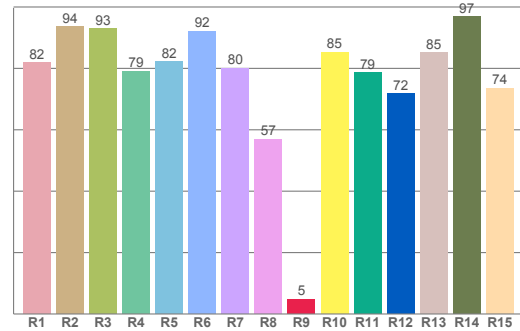
Led Strip



TM30: 83,8



CRI: 82,4 (R1-R8)



CRI R values, only R1-R8 are used to calculate final CRI value

R1	R2	R3	R4	R5	R6	R7	R8	R9	R10	R11	R12	R13	R14	R15
81,84	93,67	93,02	79,11	82,15	92,06	80,13	56,88	4,75	85,32	78,58	71,67	85,17	96,90	73,51

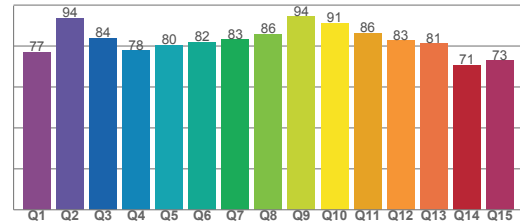
TM30 C values, 16 binned values out of total of 99 C values

C1	C2	C3	C4	C5	C6	C7	C8	C9	C10	C11	C12	C13	C14	C15	C16
78,01	81,03	80,67	91,07	91,37	93,26	85,66	90,25	84,95	77,36	81,53	85,88	86,28	78,26	77,84	75,05

CQS Q values

Q1	Q2	Q3	Q4	Q5	Q6	Q7	Q8	Q9	Q10	Q11	Q12	Q13	Q14	Q15
77,10	93,79	83,71	77,76	80,39	82,09	83,15	85,75	94,38	91,20	86,31	82,62	81,14	70,54	72,86

CQS: 81,5

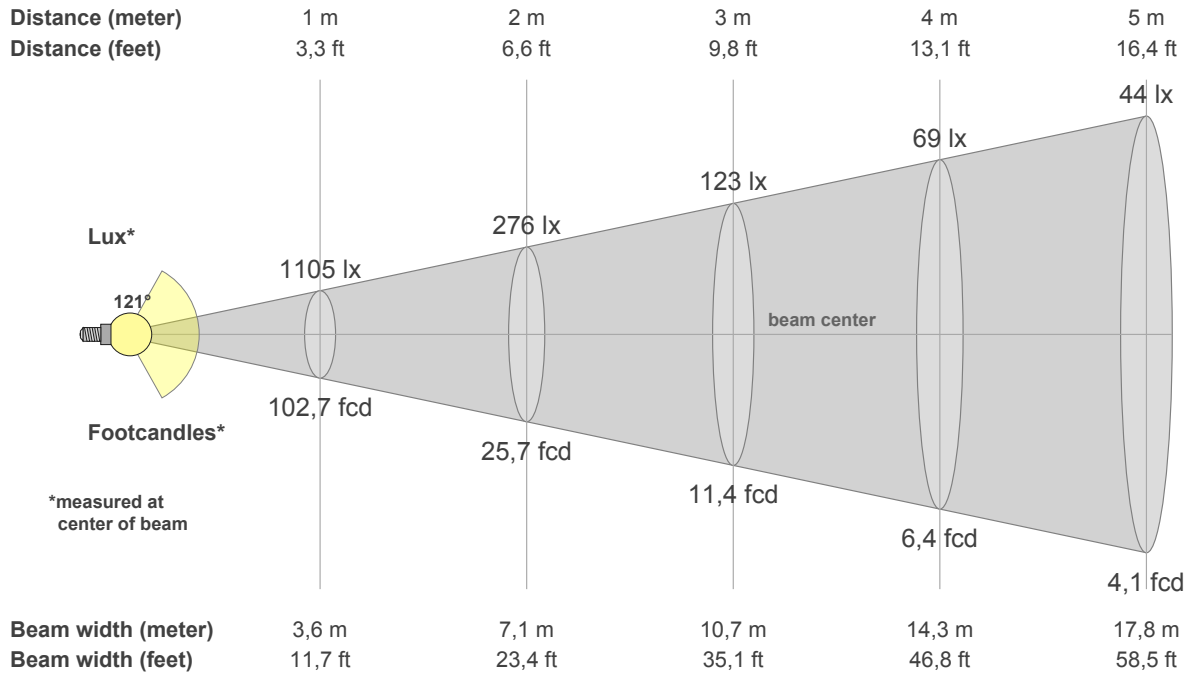


Color parameters

CCT	CRI	CRI R9	TM30 Rf	TM30 Rg	CQS	x	y	u	v	Duv
3082 K	82,4	4,8	83,8	93,7	81,5	0,4	0,4	0,2	0,3	-0,0015

FLEX - PLUS 4000-3000

Led Strip



Intensities in 0° c-plane

0°	5°	10°	15°	20°	25°	30°	35°	40°	45°	50°	55°	60°	65°	70°	75°	80°	85°	90°	95°
1105	1105	1094	1078	1055	1019	978	932	873	809	736	654	567	471	368	263	159	77	19	5
100%	100%	99%	98%	95%	92%	88%	84%	79%	73%	67%	59%	51%	43%	33%	24%	14%	7%	2%	0%

Intensities in 0° c-plane

0°	5°	10°	15°	20°	25°	30°	35°	40°	45°	50°	55°	60°	65°	70°	75°	80°	85°	90°	95°
1105	1105	1094	1078	1055	1019	978	932	873	809	736	654	567	471	368	263	159	77	19	5
100%	100%	99%	98%	95%	92%	88%	84%	79%	73%	67%	59%	51%	43%	33%	24%	14%	7%	2%	0%

Intensities in 180° c-plane

0°	5°	10°	15°	20°	25°	30°	35°	40°	45°	50°	55°	60°	65°	70°	75°	80°	85°	90°	95°
1105	1097	1083	1061	1032	997	954	905	850	787	719	646	565	479	389	294	201	108	45	9
100%	99%	98%	96%	93%	90%	86%	82%	77%	71%	65%	58%	51%	43%	35%	27%	18%	10%	4%	1%

Intensities in 180° c-plane

0°	5°	10°	15°	20°	25°	30°	35°	40°	45°	50°	55°	60°	65°	70°	75°	80°	85°	90°	95°
1105	1097	1083	1061	1032	997	954	905	850	787	719	646	565	479	389	294	201	108	45	9
100%	99%	98%	96%	93%	90%	86%	82%	77%	71%	65%	58%	51%	43%	35%	27%	18%	10%	4%	1%

Beam angle 50%	Field angle 10%	Cutoff angle 2,5%	Intensity ratio in 120° cone	Intensity ratio in 90° cone
121,5°	167,7°	179,6°	74,8%	49,7%